

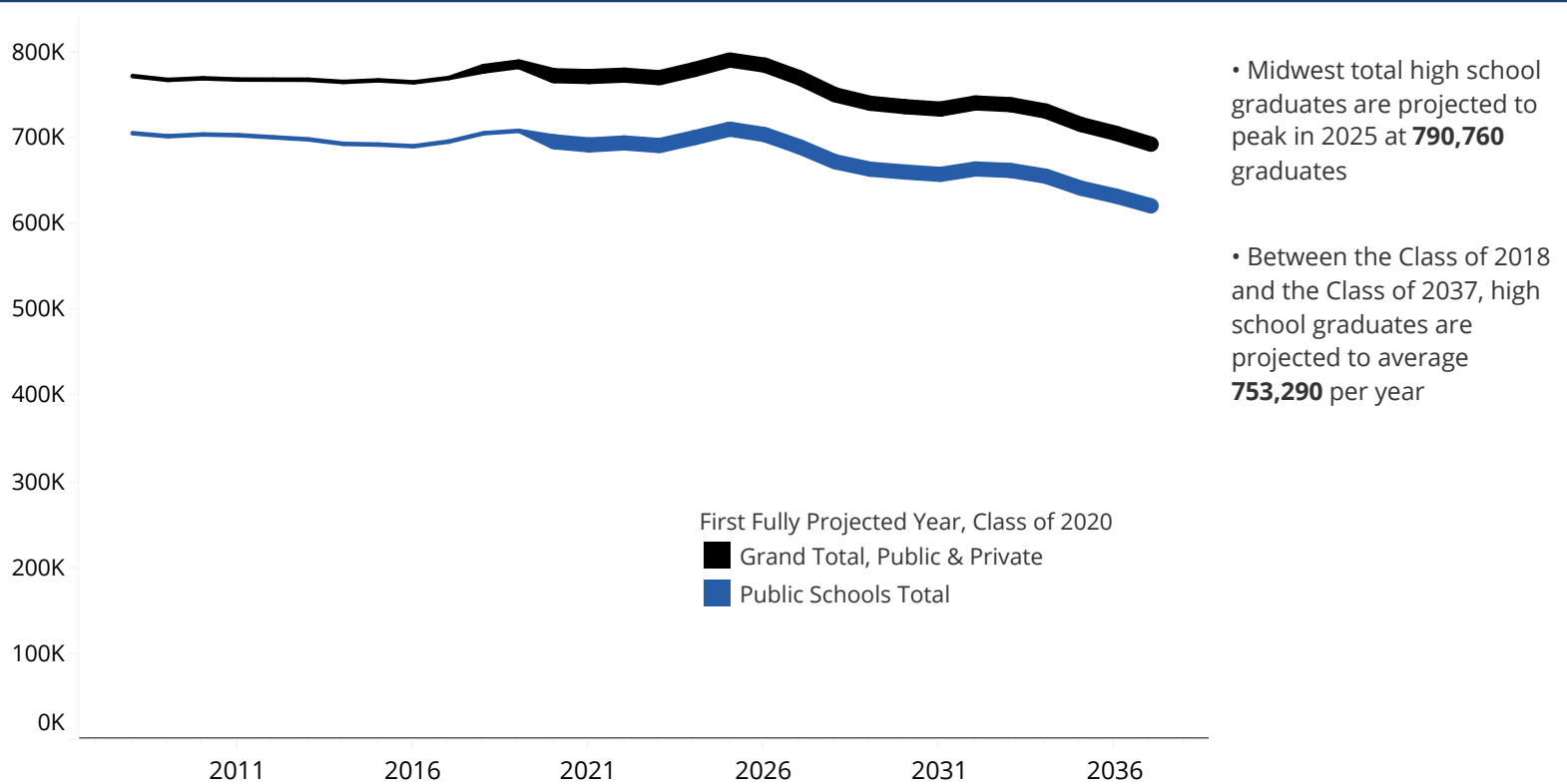
# High School Graduates Profile for

Midwest



Projected values are displayed as either thicker or darker in the profile charts. See the notes for more details.

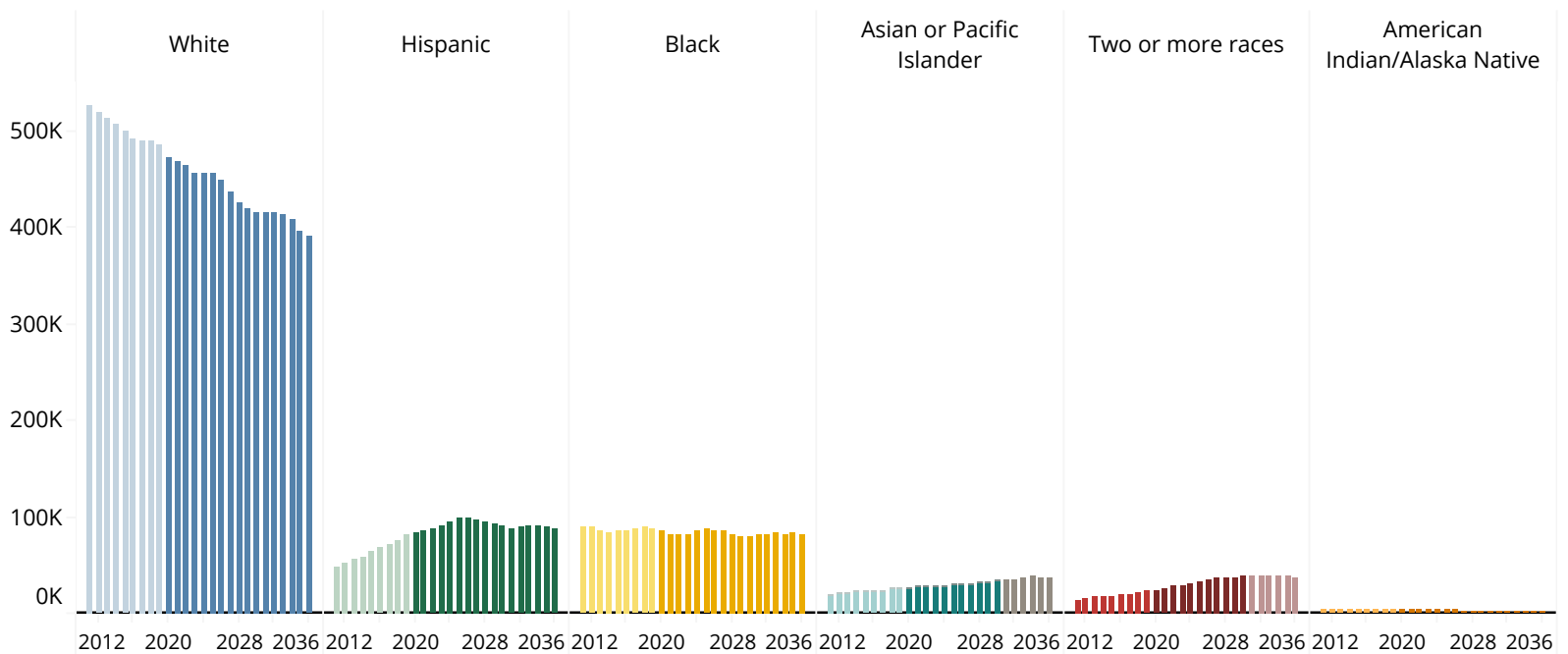
## Total & Public High School Graduates, Class of 2008 to 2037



## Public High School Graduate Trends, Class of 2011 to 2036

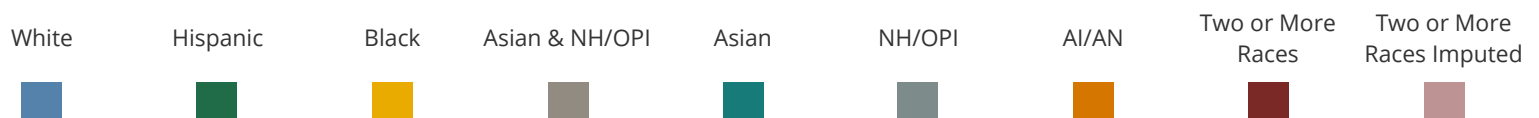
• Between the Class of 2019 and 2036, the share of non-white public graduates is projected to **increase** from **31% to 39%**

### Public High School Graduates by Race/Ethnicity



First Fully Projected Year, Class of 2020

Click on a population below to highlight trends in the chart above

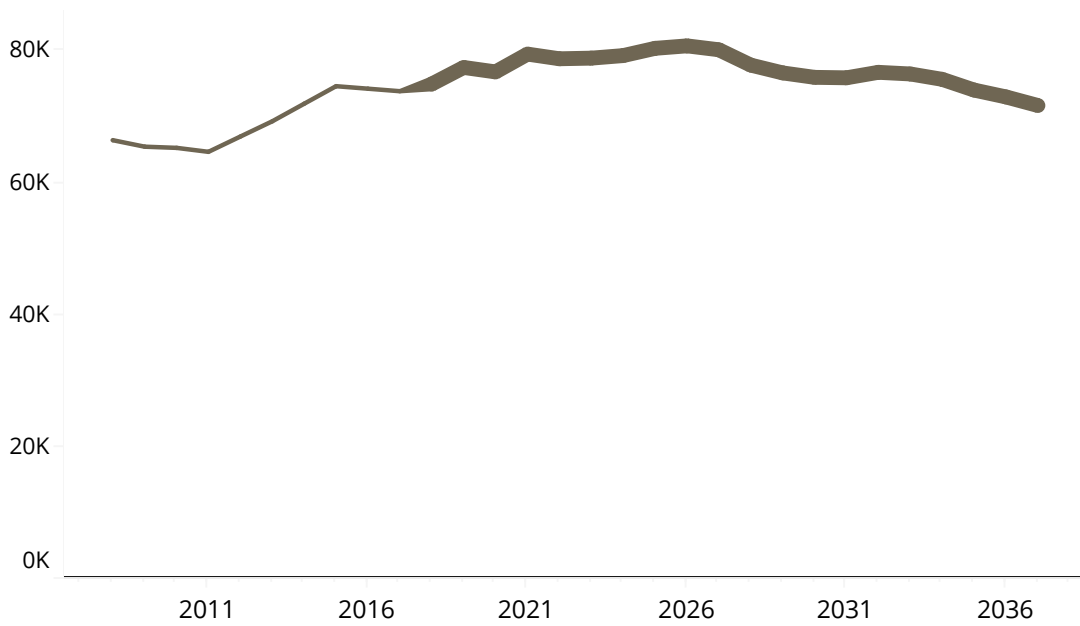


! Two or more race values for SY 2030-31 to 2035-36 are estimates and not a fully projected value. For Asian or Pacific Islander: In the years the detail is available, the number that are Asian or Native Hawaiian/Other Pacific Islander (NH/OPI) are charted separately as stacked bars. Beginning with Class of 2031, the combined total of Asian or NH/OPI is charted. Use the button below to view additional charts for projected public high school graduates by race and ethnicity.



Click to View More Race & Ethnicity Trends

### Private High School Graduates, Class of 2008 to 2037



- Between the Class of 2017 and the Class of 2037, private high school graduates are projected to average **10%** of all graduates.

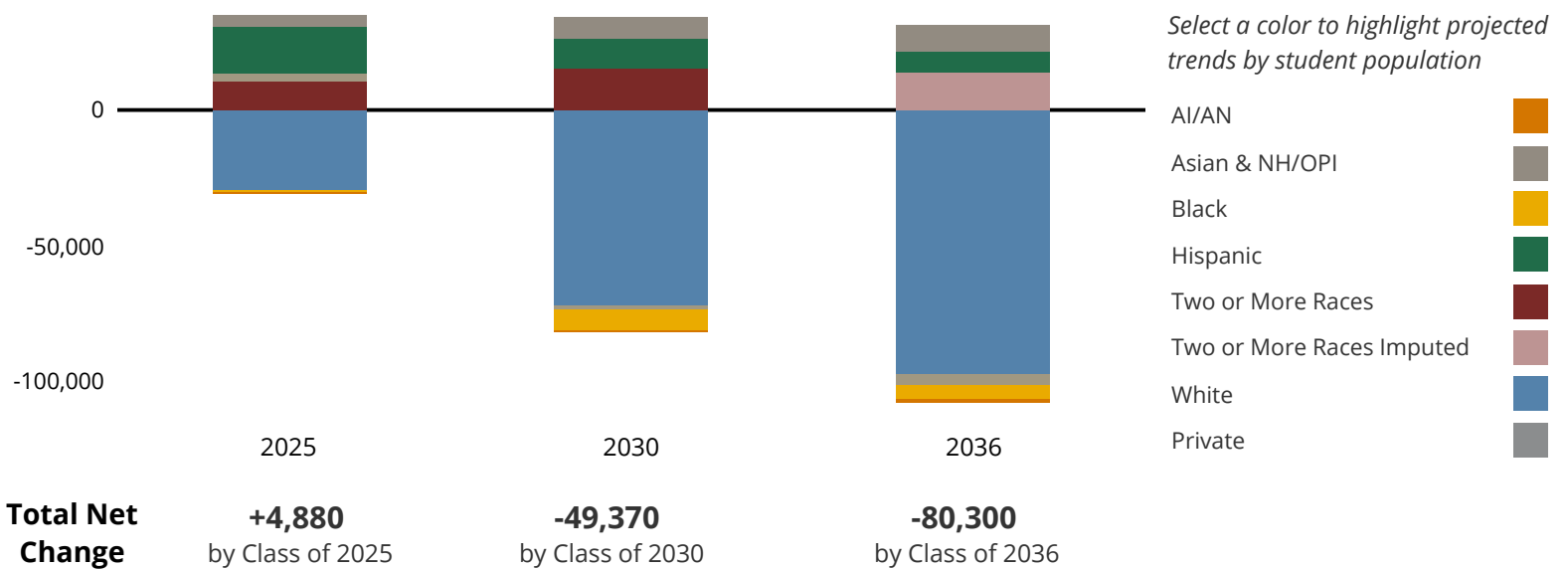
Compared to the Class of 2017 (the last reported year):

- The Class of 2025 is projected to have **6,490 more** private high school graduates.

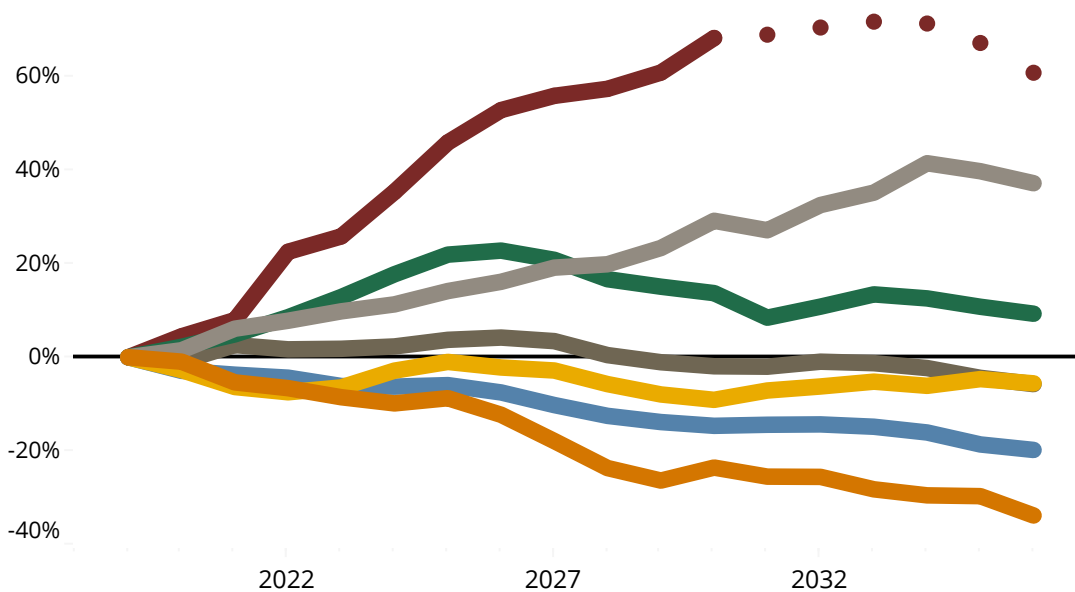
- The Class of 2037 is projected to have **2,160 fewer** private high school graduates.

### Projected Changes in High School Graduates Compared to the Class of 2019

#### Cumulative Change in the Number of Graduates



#### Cumulative Percent Change



#### Change between 2019 & 2036

- Two or More Races ▲ **61%**
- Asian/PI ▲ **37%**
- Hispanic ▲ **9%**
- Black ▼ **-6%**
- Public Schools Total ▼ **-11%**
- AI/AN ▼ **-34%**
- White ▼ **-20%**
- Private HS Grads ▼ **-6%**

! Two or more race values for SY 2030-31 to 2035-36 are estimates and not a fully projected value.

# Midwest High School Graduates



Class of	Total Graduates				Public School Graduates							
	Grand Total	Private Total	Public Total	Hispanic	White	Black	AI/AN	Two or more races	Asian & Native Hawaiian and Other Pacific Islander			
									Asian	Asian & NHOPI	NHOPI	
2008	772,095	66,456	705,639	37,691	554,430	83,621	4,258					19,899
2009	767,652	65,471	702,181	40,302	544,718	86,525	4,262					19,803
2010	769,504	65,293	704,211	45,909	541,428	91,458	4,368	1,296	1,363	19,752	72	
2011	768,067	64,692	703,375	48,730	527,717	89,358	4,123	13,065	19,814	20,382	568	
2012	767,940	67,006	700,934	53,081	519,370	88,610	4,163	14,606	20,548	21,104	556	
2013	767,842	69,319	698,523	56,485	513,963	85,540	3,955	16,616	21,431	21,964	533	
2014	765,282	71,977	693,305	57,951	507,470	84,142	3,877	17,331	21,971	22,526	555	
2015	767,112	74,634	692,478	63,545	498,970	85,139	3,755	17,822	22,641	23,247	606	
2016	764,817	74,254	690,563	67,768	491,717	84,961	3,670	18,790	23,019	23,657	638	
2017	769,834	73,874	695,960	71,757	489,422	86,701	3,695	20,260	23,430	24,125	695	
2018	780,629	74,960	705,666	76,055	489,382	88,926	3,510	21,399	25,619	26,393	774	
2019	785,878	77,470	708,405	80,878	486,697	87,429	3,458	23,142	26,073	26,801	728	
2020	772,500	76,800	695,700	82,690	472,530	85,030	3,430	24,180	26,430	27,200	770	
2021	771,540	79,500	692,050	84,850	468,510	81,850	3,270	24,980	27,620	28,440	820	
2022	773,170	78,790	694,380	87,820	465,370	80,860	3,230	28,380	28,030	28,900	860	
2023	770,200	78,880	691,320	91,330	456,670	81,770	3,160	29,140	28,470	29,440	970	
2024	779,810	79,270	700,540	95,270	456,040	84,920	3,120	31,350	28,810	29,840	1,020	
2025	790,760	80,370	710,390	98,680	457,600	86,550	3,150	33,810	29,550	30,610	1,050	
2026	784,800	80,740	704,050	99,380	449,960	85,510	3,030	35,410	30,110	31,140	1,030	
2027	769,900	80,150	689,750	97,780	436,780	84,940	2,840	36,120	30,770	31,950	1,190	
2028	750,370	77,830	672,540	94,420	425,520	82,390	2,640	36,460	31,020	32,150	1,130	
2029	740,500	76,650	663,850	93,120	419,040	80,450	2,540	37,270	31,930	33,080	1,160	
2030	736,510	75,970	660,530	92,000	415,120	79,440	2,640	38,990	33,400	34,640	1,250	
2031	733,730	75,900	657,830	87,740	416,230	81,190	2,570	39,150		34,100		
2032	740,860	76,740	664,120	89,660	416,610	81,950	2,570	39,510		35,550		
2033	738,890	76,490	662,400	91,780	414,170	82,850	2,480	39,800		36,260		
2034	731,410	75,670	655,740	91,090	408,150	82,070	2,430	39,710		37,950		
2035	715,850	74,050	641,800	89,630	395,670	83,330	2,430	38,740		37,490		
2036	705,580	73,010	632,560	88,430	389,940	82,530	2,280	37,260		36,800		
2037	692,920	71,710	621,210									

■ Projected Value (values are rounded to nearest 10)

! Two or more race values for SY 2030-31 to 2035-36 are estimates and not a fully projected value.

**Citation:** Western Interstate Commission for Higher Education, "Knocking at the College Door: Projections of High School Graduates", 2020, [www.knocking.wiche.edu](http://www.knocking.wiche.edu).

**Notes:** This is the WICHE-defined Midwest region, and does not include North Dakota and South Dakota; they are included with other WICHE member states in the WICHE West region. The Midwest region Public Schools graduate projections begin SY 2019-20, projections for Private Schools begin SY 2017-18, and the Grand Total includes projected values in SY 2017-18 to 2018-19, and is fully projected beginning SY 2019-20. Each series is independently projected, so they may not exactly sum to the totals. Public school graduates through SY 2012-13 (and enrollments through SY 2018-19) are from the National Center for Education Statistics (NCES) Common Core of Data (<https://nces.ed.gov/ccd/>). Public school graduates SY 2013-14 to 2018-19 are data gathered from states. See Technical Appendix for full data details, including for private school data, which utilize survey-based estimates from NCES Private School Universe Survey (<https://nces.ed.gov/surveys/pss/>).

Full technical details relating to the data and methodology used for these projections are provided in the Technical Appendix to the report at [www.knocking.wiche.edu](http://www.knocking.wiche.edu).

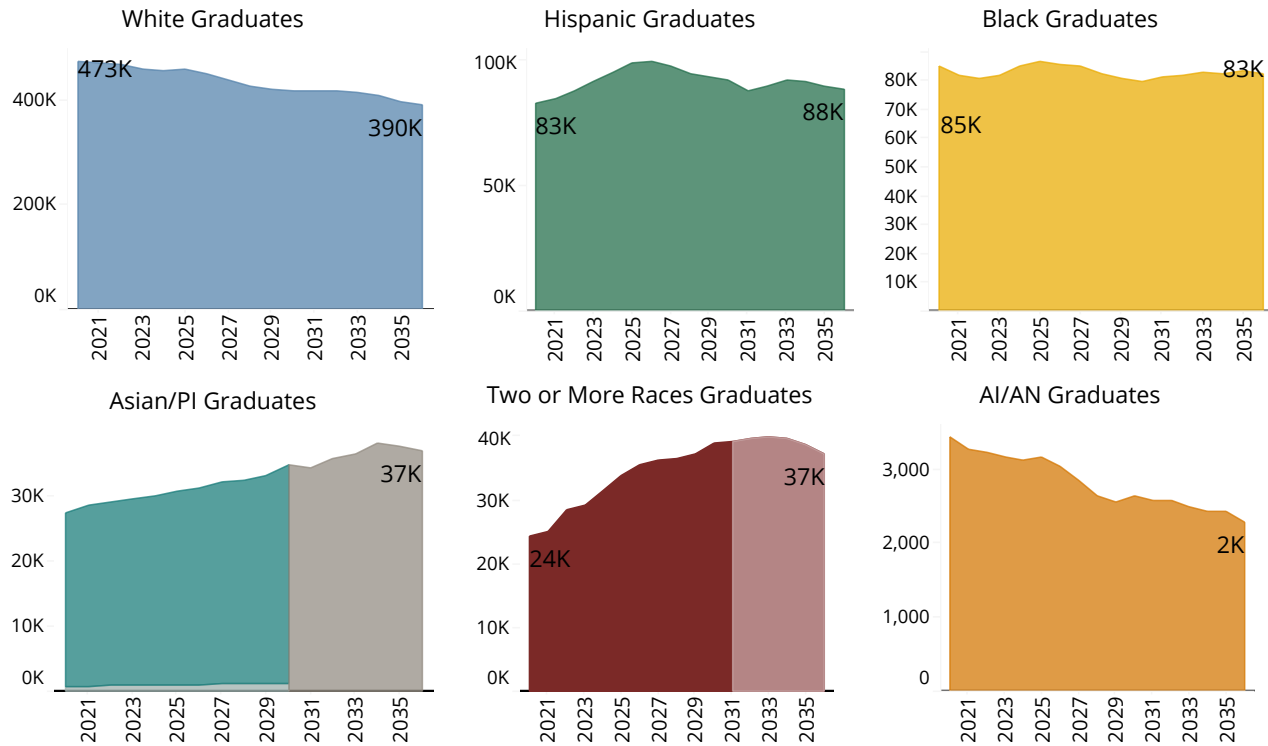
As of 12/15/2020

For best PDF viewing & printing use the download button in the bottom right corner of the dashboard and select these options: Include 'This View', Scaling 'fit1x3', Paper Size 'B4', and Orientation 'Portrait'

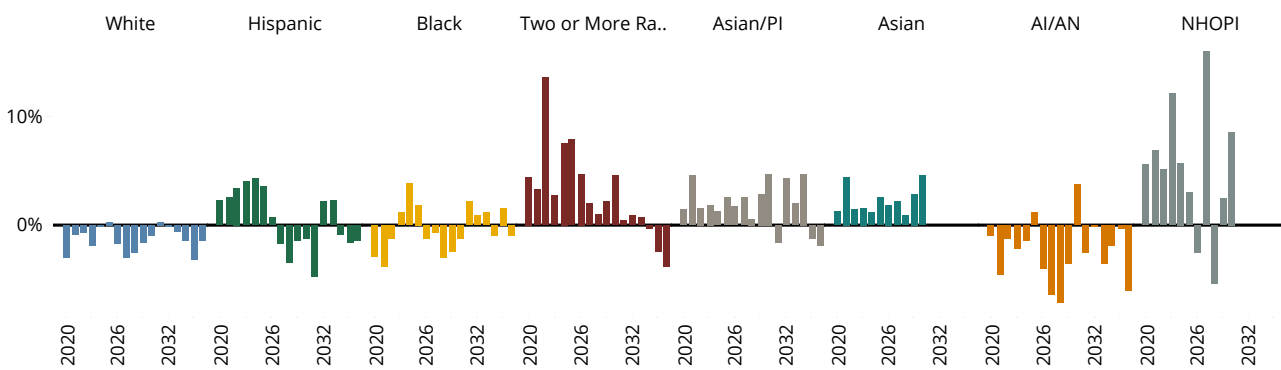
**Midwest Public High School Graduates by Race & Ethnicity**  
 Projections for Class of 2020 to 2036



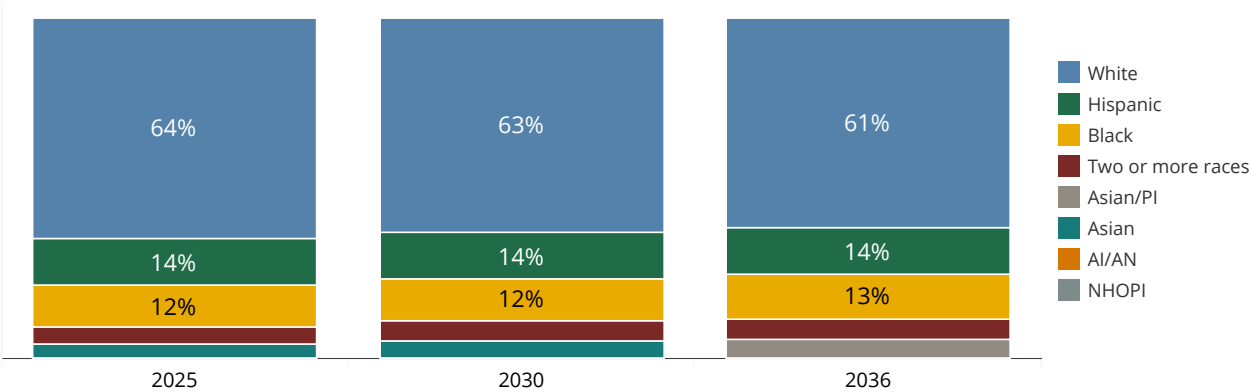
[Click here to return to full profile](#)



**Projected Annual Percent Change by Race/Ethnicity, Class of 2020 to 2036**



**Projected Share of Public High School Graduates by Race and Ethnicity, Class of 2025, 2030, and 2036**



Hispanic graduates are of any race. Other races are single-race non-Hispanic or two or more races non-Hispanic. Two or more race values for SY 2030-31 to 2035-36 are estimates and not a fully projected value. For Asian or Pacific Islander: In the years the detail is available, the number that are Asian or Native Hawaiian/Other Pacific Islander (NH/OPI) are charted separately across these charts. Beginning with Class of 2031, the combined total of Asian or NH/OPI is charted. Use the button below to view additional charts for projected public high school graduates by race and ethnicity.

**Citation:** Western Interstate Commission for Higher Education, "Knocking at the College Door: Projections of High School Graduates", 2020, [www.knocking.wiche.edu](http://www.knocking.wiche.edu).

**Notes:** This is the WICHE-defined Midwest region, and does not include North Dakota and South Dakota; they are included with other WICHE member states in the WICHE West region. The Midwest region Public Schools graduate projections begin SY 2019-20, projections for Private Schools begin SY 2017-18, and the Grand Total includes projected values in SY 2017-18 to 2018-19, and is fully projected beginning SY 2019-20. Each series is independently projected, so they may not exactly sum to the totals. Public school graduates through SY 2018-19 are from the National Center for Education Statistics (NCES) Common Core of Data (<https://nces.ed.gov/ccd/>). Public school graduates SY 2013-14 to 2018-19 are data gathered from states. See Technical Appendix for full data details, including for private school data, which utilize survey-based estimates from NCES Private School Universe Survey (<https://nces.ed.gov/surveys/pss/>). Full technical details relating to the data and methodology used for these projections are provided in the Technical Appendix to the report at [www.knocking.wiche.edu](http://www.knocking.wiche.edu).